

# ORGANISATION OF THE WORKS PROJECT MANAGEMENT

## MESRI\*, CONTRACTING AUTHORITY FOR THE PROGRAM

Leads the project in conjunction with the Ministère des Solidarités et de la Santé/ French Ministry of Health and Social Solidarity and signs the site concession agreement therefor.

## PARISANTÉ CAMPUS

Defines the scientific content of the program (research, innovation) and coordinates the scientific activities of the future campus.

## EPAURIF\*\*

Ensures performance of the delegated project management for the program, in respect of the real estate and programming aspects. Operationalises and implements the prior preliminary consultation component.

# COST AND PROVISIONAL SCHEDULE OF THE PROGRAM

The cost of the program has been assessed at around **360 million euros**.

The financing for the Parisanté Campus program would be shared between public and a private and a private sector operator, to be charged with responsibility for operating certain spaces, through a **concession agreement**.



\* Ministère de l'Enseignement Supérieur de la Recherche et de l'Innovation/ French Ministry of Higher Education, Research and Innovation \*\* Etablissement Public d'Aménagement Universitaire de la Région Île-de-France/ French Public Agency for University Planning & Development for the Île-de-France Region

# CNDP PRELIMINARY CONSULTATION FROM SEPTEMBER 20<sup>TH</sup> TO NOVEMBER 13, 2021

In order to inform and collect the opinion of the public with regard to the opportunity and the main characteristic features of the future campus, it has been decided by the Commission Nationale du Débat Public (CNDP)/ French National Commission for Public Hearings and Debate to conduct a prior preliminary consultation process. The consultation will in particular make it possible to ensure discussion and debate in respect of the opportunity, the characteristics, the relevant socio-economic issues attached to the programme as well as the significant impacts on the environment and regional planning-development, alternative solutions (including not undertaking implementation of the program) and the modalities for ensuring information to and participation by the public after the preliminary consultation. It is scheduled to be organised from September 20<sup>th</sup> to November 13, 2021 inclusive. This consultation will take place under the beneficial presence of three guarantors of the consultation, appointed by CNDP, in order to ensure transparency of the information and appropriate participation of the public.

## STAY INFORMED!

The consultation documentation is available in the city halls of the V<sup>th</sup>, VI<sup>th</sup>, XIII<sup>th</sup> and XIV<sup>th</sup> arrondissements (administrative districts) of Paris as well as at the scientific and university institutions of the field.

All of the information documents may be downloaded from the consultation website: [concertation-parisantecampus.fr](http://concertation-parisantecampus.fr)

The guarantors may be contacted at: [PariSanteCampus@garant-cndp.fr](mailto:PariSanteCampus@garant-cndp.fr)

## EXPRESS YOURSELF! 15 MEETINGS WITH THE PUBLIC

### INAUGURAL PUBLIC MEETING

Tuesday, September 21, 2021  
(19:00 hrs - 21:00 hrs)

Amphithéâtre Luton/ Luton Amphitheater of the UFR Médecine [Unité de Formation et de Recherche de Médecine/ Medical Education- Training and Research Unit] - Cochin  
(24 Rue du Faubourg Saint-Jacques, 75014 Paris)

### URBAN WORKSHOP \* on the program and the proposed urban plan

Thursday, 7 October  
(19:00 hrs - 21:00 hrs)

City hall of the V<sup>th</sup> arrondissement of Paris  
(21 place du Panthéon 75005 Paris)

### LOCAL COMMUNITY MEETING

Saturday, 30 October  
(9:00 hrs-12:00 hrs)

at the Marché de Port-Royal/ Port-Royal Market

### LOCAL COMMUNITY MEETING

Thursday, 4 November  
(9:00 hrs-12:00 hrs)

at the Marché de Port-Royal/ Port-Royal Market

### WEBINAR on health data security issues

Tuesday, 12 October  
(19:00 hrs - 21:00 hrs)

### WEBINAR on training projects

Thursday, 14 October  
(19:00 hrs - 21:00 hrs)

### WEBINAR on the environmental issues and the economic benefits and outcomes from the project

Tuesday, 19 October  
(19:00 hrs - 21:00 hrs)

### SCIENTIFIC CAFÉ \* on the research projects envisaged and the promotion and value enhancement of the research projects

Thursday, 21 October  
(19:00 hrs - 21:00 hrs)

Conference Room of the École Supérieure de Physique et de Chimie Industrielles (ESPCI)/ French Industrial Physics and Chemistry Higher Educational Institution  
(6/ 12 Rue Jean Calvin, 75005 Paris)

### LOCAL COMMUNITY MEETING

Tuesday, 28 September  
(9:00 hrs - 12:00 hrs)

at the Marché de Port-Royal/ Port-Royal Market

### ONLINE SCIENTIFIC CAFÉ on the contributions of digital technology to health

Monday, 4 October  
(19:00 hrs - 21:00 hrs)

### URBAN TOURS\*

Monday, 27 September  
(10:00 hrs - 12:00 hrs);

Wednesday, 13 October  
(14:00 hrs - 16:00 hrs);

Tuesday, 26 October  
(8:00 hrs - 10:00 hrs)

Ancien Hôpital d'Instruction des Armées/ Former Armed Forces Teaching Hospital of Val-de-Grâce  
(74 Boulevard de Port-Royal, 75005 Paris)

Advices and questions could be submitted by visiting the website at: [concertation-parisantecampus.fr](http://concertation-parisantecampus.fr)

\* Participation upon registration

 **GOVERNEMENT**

Liberté  
Égalité  
Fraternité

**parisanté  
campus**



## PROGRAM FOR PARISANTÉ CAMPUS ON THE SITE OF THE FORMER HÔPITAL D'INSTRUCTION DES ARMÉES/ ARMED FORCES TEACHING HOSPITAL OF VAL-DE-GRÂCE

## CNDP PRELIMINARY CONSULTATION FROM SEPTEMBER 20<sup>TH</sup> TO NOVEMBER 13, 2021

For more information, visit the consultation website at: [concertation-parisantecampus.fr](http://concertation-parisantecampus.fr)





# OBJECTIVES OF PARISANTÉ CAMPUS

This program is aimed to **develop the digital technologies for health sector** in France, which is a source of major societal and economic challenges and issues, in particular when faced off against the leaders in Asia and the United States. PariSanté Campus ambitiously aims to be a major French and European player in health data analysis and value enhancement as well as the unifying place for bringing together the entire professional world.

Given the significant societal challenges associated with this subject, the program will contribute to the broader and deeper reflections on science and digital technologies for health and will ensure that ethical questions are placed at the core of its major concerns.

This program also aims to **redevelop the former Hôpital d'Instruction des Armées/ Armed Forces Teaching Hospital of Val-de-Grâce, in a manner that is respectful of the site and its environment.**



## REUSED BUILDING OPERATION

PariSanté Campus will take place in the buildings of the former Hôpital d'Instruction des Armées/ Armed Forces Teaching Hospital of Val-de-Grâce. The proposed reused project could be broken down into a number of interventions on the site:

- Removal of small buildings annexed to the main building
- Rehabilitation of the main building of the hospital and adaptation of the hospital building to the needs of the program

## SCIENTIFIC PROGRAM

PariSanté Campus is a **campus project for research and innovation in the field of digital technologies for health**, which is expected to be opened in the 2028 time horizon on the site of the former Hôpital d'Instruction des Armées/ Armed Forces Teaching Hospital of Val-de-Grâce. The objective is to structure a French sector dedicated to digital technologies for health having global reach, which is open to partnerships in the Ile-de-France region, as well as at the national and international levels. The former Hospital would thus be redeveloped in order to **accommodate researchers, teaching professionals, business enterprises and students.**

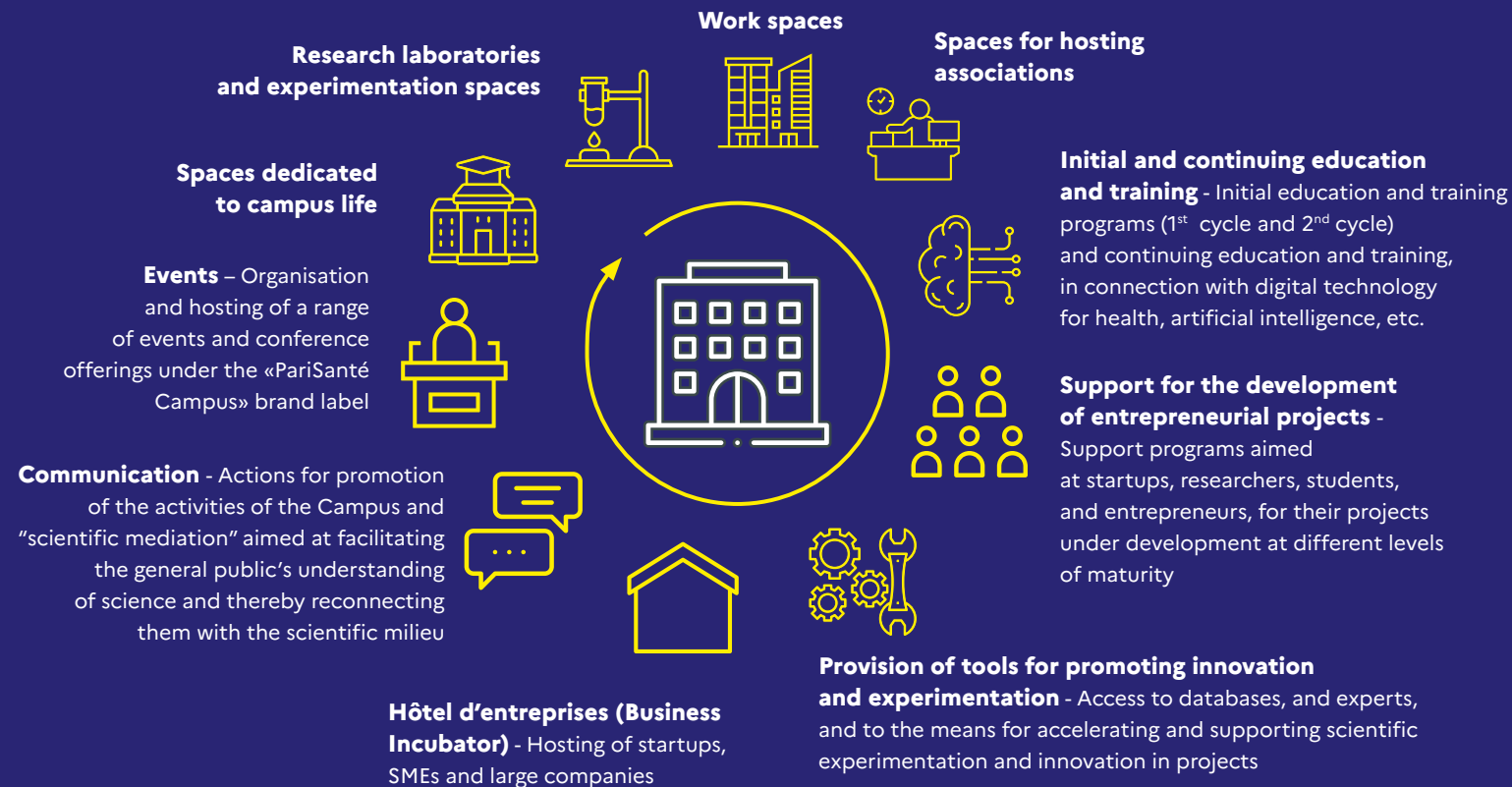
The stakeholders of the program are **public actors** who have long been involved in analysis and research around health data, as well as in activities aimed at enhancing the value perception of research: the Institute

National de la Santé et de la Recherche Médicale/ French National Institute of Health and Medical Research (Inserm), the Université PSL (Paris Sciences & Lettres)/ University of Paris for the Sciences and Humanities, the Institut National de Recherche en Sciences et Technologies du Numérique/ French National Institute for Research in Digital Sciences and Technologies (Inria), the Agence du Numérique en Santé/ Digital Technologies for Health Agency (ANS), and the Health Data Hub (HDH). The PariSanté Campus program will also involve **private players** (startups, large and medium-sized enterprises) in this centre for cutting-edge research.

Thanks to the databases of the public sector operators and the competence and expertise of the Health Data Hub, which ensures easy and unified, transparent and secure access to data, researchers will mobilise a **broad**

**disciplinary spectrum, ranging from basic sciences to human and social sciences.** They will rely on data warehouses that are national in scope and work on novel means for **protecting populations against the collection and misuse** of personal data which is becoming increasingly sophisticated, all with a view to preserving our "health democracy".

Research will derive benefits accruing in the same place from the coming together of a number of diverse actors and from the very high degree of interdisciplinarity in the service of digital technologies for health. Major scientific advances are expected in the fields of epidemiology, screening, diagnostics, and therapy for cancer, as well as in the field of neurodegenerative or cardiovascular diseases and conditions.



## CHALLENGES OF THE SCIENTIFIC PROGRAM

- Bringing together at one consolidated site the entire cluster of the scientific community (researchers, teaching professionals, entrepreneurs, students, etc),
- Structuring a French sector dedicated to digital technologies for health having both a European and global reach, thanks to an extensive national network,
- Informing the citizenry about digital technologies for health by serving as an essential tool for interaction, learning and provision of information meant for the public
- Improving the functioning of the health system, by facilitating access to care, by developing prevention strategies and practices, and by evolving towards predictive and personalised strategies.

## CHALLENGES OF THE REAL ESTATE PROGRAM

- Preserving and enhancing the value of the historical heritage,
- Opening the site to the city by offering new green spaces to the public,
- Preserving biodiversity and reinforcing the greening of the site,
- Ensuring alignment with the objectives of the Climate Plan,
- Contributing to the socio-economic dynamism of the district,
- Making every effort to minimise as much as possible any disruption or disturbance to the inhabitants, merchants and businesses, and users of the Port-Royal market by operating a low-nuisance project and site.